



LEVERAGING AI FOR ENHANCED HEMP INDUSTRY SUCCESS

Insights from Smarter Revolution



Introduction



The hemp industry, burgeoning with potential, stands at the precipice of a technological revolution. As a crop that has historically been a cornerstone for various products, ranging from textiles to wellness items, hemp cultivation and processing have always demanded innovation to meet evolving market demands and regulatory landscapes. In this dynamic arena, artificial intelligence (AI) emerges as a game-changer, poised to redefine how hemp businesses operate and thrive.

Enter Smarter Revolution, a vanguard in the digital realm, harnessing the power of AI to transform the hemp industry. With over three decades of experience in technology and marketing, Smarter Revolution is uniquely positioned to guide hemp businesses through this new era of digital agriculture and marketing. This white paper explores how integrating AI solutions, as championed by Smarter Revolution, can enhance various aspects of the hemp industry, from cultivation to customer engagement.



AI in Hemp Cultivation and Processing



AI-DRIVEN ANALYTICS

In the world of hemp cultivation, success hinges on the ability to make informed decisions. Here, AI-driven analytics play a crucial role. By analyzing vast amounts of data - from soil health indicators to weather patterns - AI algorithms can provide hemp farmers with unprecedented insights into their crops. These analytics can predict the best planting times, optimize irrigation schedules, and even suggest the most suitable hemp strains for specific environmental conditions.

Smarter Revolution takes this a step further by offering tailored data analysis services. These services are not just about collecting data; they are about interpreting it in ways that are meaningful and actionable for hemp farmers. This might include personalized recommendations for crop rotation, pest control strategies based on predictive modeling, or even yield optimization techniques derived from historical data patterns.



AUTOMATION IN HEMP PROCESSING

Once the hemp is harvested, the next challenge is processing. This stage is where AI's potential shines brightly in automating mundane and labor-intensive tasks. AI can oversee the sorting of hemp based on quality, automate the extraction processes for CBD oil, and ensure consistency in the final product – a crucial factor in an industry where quality directly influences market value.

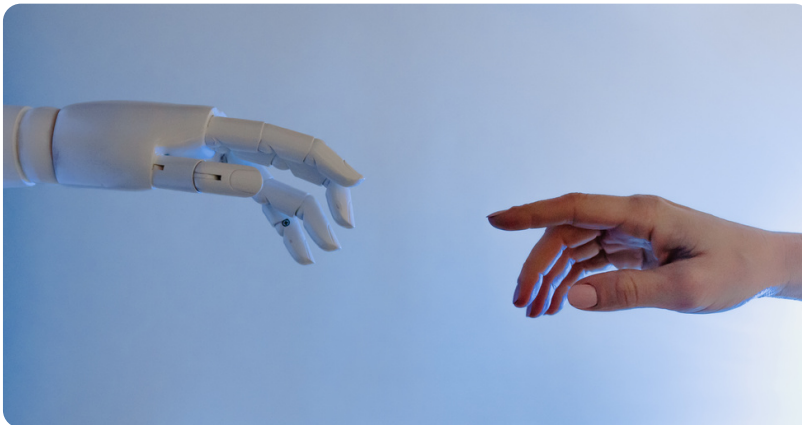
Smarter Revolution's automation solutions are tailored to these needs. By implementing AI-driven systems, hemp processing becomes not only faster but also more efficient and less prone to error. This automation extends beyond physical tasks. AI systems can also manage inventory, track shipments, and even predict market trends, helping businesses stay one step ahead.



ROLE OF AI IN TARGETED MARKETING AND AUDIENCE

In today's digital age, marketing is more than just selling a product; it's about creating a connection with the audience. AI revolutionizes this aspect by offering deep insights into customer behaviors and preferences. Through AI algorithms, businesses can analyze vast datasets to identify trends, predict consumer behavior, and tailor their marketing efforts accordingly.

Smarter Revolution harnesses this power to create targeted marketing campaigns for hemp businesses. By analyzing data from various touchpoints – social media interactions, website traffic, and even past purchase behaviors – Smarter Revolution can craft marketing strategies that resonate with the intended audience. This could be as simple as determining the best time to post on social media or as complex as creating personalized email marketing campaigns based on user interests.



In the competitive landscape of the hemp industry, maintaining strong customer relationships is key to sustained success. This is where AI-enhanced Customer Relationship Management (CRM) comes into play, serving as a linchpin in understanding and responding to customer needs efficiently.

UTILIZING AI IN CRM SYSTEMS

The integration of AI into CRM systems revolutionizes how businesses interact with their customers. AI-powered CRMs can analyze customer data, track purchasing patterns, and predict future buying behaviors, enabling hemp businesses to offer more personalized services. This includes targeted product recommendations, timely follow-ups, and proactive customer support.



At Smarter Revolution, the focus is on harnessing these capabilities to forge stronger customer connections. The AI-driven CRM solutions offered not only automate mundane tasks like data entry and lead tracking but also provide insightful analytics. These insights help businesses understand their customers on a deeper level, tailor their communication strategies, and ultimately build more meaningful relationships.

PERSONALIZED AI CLIENT INTERACTION

AI tools extend beyond data analysis; they facilitate personalized interactions that resonate with customers. For instance, AI chatbots can provide instant customer support, answering queries and offering product recommendations. Moreover, AI can help segment customers based on their interests, enabling more targeted and relevant communication.



Smarter Revolution leverages these tools to enhance client interactions. By implementing AI chatbots, personalized email campaigns, and predictive analytics, clients can enjoy a more tailored experience, increasing satisfaction and loyalty.



OPERATIONAL EXCELLENCE THROUGH AI

Operational efficiency is crucial in the fast-paced hemp industry. AI not only streamlines operations but also brings a level of precision and foresight that was previously unattainable.

STREAMLINING BUSINESS PROCESSES WITH AI

AI can automate various aspects of business operations, making them more efficient and cost-effective. For example, AI systems can handle inventory management, track product lifecycles, and even optimize supply chain logistics. This automation reduces the risk of human error, saves time, and allows businesses to focus on core activities.

Smarter Revolution's process optimization services are designed to integrate seamlessly with existing business operations. The goal is to identify areas where AI can bring about the most significant improvements, whether it's through automating repetitive tasks or providing strategic insights for decision-making.

STREAMLINING BUSINESS PROCESSES WITH AI

Effective logistics and supply chain management are vital for the hemp industry, particularly given the regulatory and compliance challenges it faces. AI aids in this by offering predictive analytics for supply chain optimization, real-time tracking of shipments, and efficient route planning for logistics.

Smarter Revolution's AI solutions empower businesses to overcome logistical hurdles and ensure a smooth supply chain. By predicting potential disruptions and optimizing routes, businesses can reduce costs and enhance delivery efficiency, thereby improving customer satisfaction.



Challenges and Ethical Considerations



While AI presents numerous opportunities, it also comes with its own set of challenges and ethical considerations. Navigating these effectively is crucial for businesses looking to adopt AI responsibly.

NAVIGATING THE CHALLENGES OF AI IMPLEMENTATION

Implementing AI can be daunting, especially for businesses new to this technology. Challenges include the high initial cost, the complexity of integration, and the need for skilled personnel to manage and maintain AI systems. Additionally, there's the challenge of ensuring data security and privacy, which is paramount in an industry dealing with sensitive customer information.

Smarter Revolution acknowledges these challenges and offers comprehensive support to clients during AI implementation. This includes assistance with choosing the right AI solutions, integrating them into existing systems, and providing training to staff. The focus is on making the transition to AI as smooth and seamless as possible.

Ethical AI Integration Assistance by Smarter Revolution

Ethical considerations in AI implementation, such as data privacy, unbiased algorithms, and transparent operations, are critical. Smarter Revolution is committed to ethical AI practices, ensuring that the AI solutions recommended and implemented adhere to the highest standards of data integrity and ethical use.

This commitment extends to educating clients about ethical AI usage, ensuring they're not only compliant with regulations but also operating in a manner that fosters trust and reliability among their customers.

Conclusion



The integration of AI into the hemp industry marks the beginning of a new era of innovation and growth. As this white paper has explored, AI offers tremendous opportunities for enhancing cultivation, processing, marketing, customer relationship management, and operational efficiency.

Smarter Revolution, with its deep expertise in AI and digital marketing, stands at the forefront of this revolution. By offering tailored AI solutions and comprehensive support, Smarter Revolution is helping hemp businesses harness the power of AI to achieve new levels of success.



As the industry continues to evolve, the role of AI will only become more significant. Businesses that embrace these technological advancements, with the guidance of seasoned experts like Smarter Revolution, will be well-positioned to lead the way in this exciting new chapter of the hemp industry.

What specific benefits does AI offer for hemp cultivation?



AI technology significantly enhances hemp cultivation by providing predictive analytics for crop yields, optimizing irrigation and pest control, and offering insights into soil health. This results in more efficient use of resources, better crop quality, and potentially higher yields.

How does AI transform hemp processing?



AI can automate and streamline the processing of hemp, from sorting raw materials to extracting compounds like CBD oil. This automation leads to increased efficiency, consistent product quality, and reduced labor costs.

In what ways can AI improve digital marketing strategies for hemp businesses?



AI can automate and streamline the processing of hemp, from sorting raw materials to extracting compounds like CBD oil. This automation leads to increased efficiency, consistent product quality, and reduced labor costs.

Can AI help in understanding and expanding a hemp business's customer base?



Yes, AI tools like predictive analytics and customer segmentation can provide deep insights into customer preferences and buying patterns, helping businesses to tailor their products and marketing efforts to attract and retain a wider customer base.

What role does AI play in CRM for the hemp industry?



AI enhances CRM systems by automating data entry, providing sales forecasts, and offering insights into customer behavior. This leads to more effective customer interactions, improved sales strategies, and better customer retention rates.

How does Smarter Revolution's AI-driven approach tackle operational challenges in hemp businesses?



Smarter Revolution's AI solutions focus on automating routine tasks, optimizing supply chains, and streamlining logistics. This approach addresses common operational challenges such as inventory management, distribution efficiency, and process optimization.

What are the common challenges in implementing AI in the hemp industry, and how does Smarter Revolution address them?



Challenges include the cost of implementation, integration with existing systems, and the need for AI expertise. Smarter Revolution addresses these by offering scalable AI solutions, seamless integration support, and training for staff to ensure smooth adoption.

In what ways can AI improve digital marketing strategies How does AI ensure compliance and quality control in the hemp industry?



AI systems can monitor and ensure adherence to regulatory standards, automate quality checks during processing, and maintain thorough records for compliance purposes, thereby ensuring consistent product quality and regulatory compliance.

What ethical considerations are involved in using AI in the hemp industry, and how does Smarter Revolution approach these?



Ethical considerations include data privacy, algorithmic transparency, and unbiased decision-making. Smarter Revolution prioritizes ethical AI practices by adhering to strict data privacy standards, using transparent algorithms, and providing unbiased AI solutions.

How will AI shape the future of the hemp industry according to Smarter Revolution?



AI is expected to revolutionize the hemp industry by enhancing efficiency, enabling precise agriculture practices, revolutionizing marketing strategies, and facilitating better customer relationships. Smarter Revolution anticipates that AI will be integral to sustainable growth and innovation in the industry.

